



الاختيار المميز لتجارة الأبواب الأتوماتيكية  
Al Ikhtayar Al Mumayaz Automatic Doors Tr  
Al Rehab Metal & Molding LLC

Specialized in Cast Aluminum, Steel Works, Spiral  
Staircase, Cat Ladder, Automatic System &  
Stainless steel work



*Quality & Service is our Focus*

Tel: 06 5393727

Email: [info@aimmetal.com](mailto:info@aimmetal.com), P.O.Box: 78695, Sharjah, UAE

Customer Care Contact: 050 2034580

## INTRODUCTION:

We have great pleasure to introduce **AL IKHTAYAR AL MUMAYAZ AUTOMATIC DOORS TR.**, Sharjah -UAE. Specializing in Mild Steel, Cast Aluminium and its other related products. Having well established in U.A.E. we are able to make use of our vast knowledge & resources in Manufacturing, Fabricating & installing in Cast Aluminium & Metal Products such as Gates, Fencing, Grilles, Handrails, Doors, Car Park Sheds.

Our prices are very competitive to suit your budget and our work to the utmost satisfaction of the clients. We proudly claim that the company's success is mainly due to strict quality control maintained by the company staff and supported by skilled motivated labour/staff & guided by qualified management. It would give us great pleasure if you could visit our facility at your convenience or give us privilege to meet you for any further clarification. Please reassure that we endeavour to provide the best possible service we can offer at all times & look forward to have mutual business relationship with you in the near future. If you have any requirements our technical Representative shall be deputed to meet you to draw up exact specifications. We are hoping to give good impression and have confidence with us in the near future.

We shall be pleased to handle any kind of jobs listed below which suits your requirement, with outmost professionalism. Looking forward to working with you in an intellectually stimulating and technically satisfying manner.

*Tel: 06-5393727*

*Email: [info@aimmetal.com](mailto:info@aimmetal.com), P.O Box: 78695, Sharjah, UAE*

*Customare Care Contact:- 050-2034580*

## GENERAL INFORMATION & COMPANIES POLICIES:

Nature: MANUFACTURERS, FABRICATORS.

Bankers: Emirates Islamic Bank, Al Qasamia Br. Sharjah

### COMPANY POLICIES:

- ✚ Prevention and Protection policy ensure all safe conduct of work at factory and under supervision at site as well under HSEPlan. It includes:
  - First-aid.
  - Protection of personal equipment like: Head, Hear, Eye, Respiratory Hand, Foot.
  - Fire Protection Equipment like: Fire Hose, Fixed Fire Fighting Equipment.
  - Safety of Scaffolds, Work platforms, Safety Belts and Lifelines.
- ✚ Quality policy ensure all inspections and testing supported with internal and external audit reports.
- ✚ Fabrication process ensure all materials and joints welding inspection under first off Jig Inspection.
- ✚ Site Works ensure complete handing over of the projects supported with several site-work Testing, Reports and Inspections.

*Tel: 06-5393727*

*Email: info@aimmetal.com, P.O Box: 78695, Sharjah, UAE*  
*Customare Care Contact:- 050-2034580*

## PRODUCTS AND SERVICES:

### **We specialized in Following Metal Works:**

- # Wrought Iron Works
- # Cast Aluminum & Molding Works
- # Car Parking Sheds
- # Spiral Stair & Cat Ladder
- # Metal Fence, Railing & Gates
- # Steel / Aluminum Rolling Shutter with Automation System
- # Stainless Steel Works
- # Pergola Works
- # Calustra Panels
- # Window Grills.
- # All type of steel Structure Works
- # All Types of Steel / Alum Canopy
- # All types of Miscellaneous Metal Works.
- #

### **We also market and provide service for wide Range of :**

- Automatic Swing & Sliding Gate Operators.
- # Automatic Car Parking Barriers.
- # Automatic Overhead Sectional Doors.
- # Automatic Garage Doors.
- # Video door phones.
- # Access Control with Mobile System

*Tel: 06-5393727*

*Email: [info@aimmetal.com](mailto:info@aimmetal.com), P.O Box: 78695, Sharjah, UAE*

*Customare Care Contact:- 050-2034580*

# LIST OF COMPLETED PROJECTS

PROJECT NAME	JOB DESCRIPTION	LOCATION
(G+2) 41 Private Villas	Cast Alum Gates, Fences, Balconies & Staircase.	DIP – Dubai
(G+1) 17 Villa Complex	Mild Steel Staircase, Cast Alum Gate & Fences.	Al Jurf Ajman
(G+2) Private 4 Villas	Cast Alum Gates, Fences, Balconies & Staircase.	Khalifa City – Abu Dhabi
G + Mezzanine Warehouse	Car Parking Shed, Gate Barrier System, Mild Steel Gate & Fences.	DIP – Dubai
Milk Plant Factory	Steel Structure Works (Platform)	DIP – Dubai
G+1 Private Villa	Cast Alum Gate	Kalba
G+2 Private Villa	Cast Alum Gate	Al Qaryan - Sharjah
G+2 Private Villa	Cast Alum Gate	Jumeriah – Dubai
G+2 Private Villa	Cast Alum Gate & Mild Steel Staircase	Al Jurf – Ajman
G+2 Private Villa	Cast Alum Gate	Mizhar 1 - Dubai
G+2 Private Villa	Cast Alum Gate & Staircase	Al Warqa – Dubai
G+2 Private Villa	Steel Structure Works (Canopy)	Mizhar 1 – Dubai
G+2 Private Villa	Mild Steel Gate, Fence & Staircase	Dubailand – The Villas
G+2 Private Villa	Glass / Alum Railing	Al Khawaneez – Dubai
G+2 Private Villa	Car Parking Shed	Jumeriah Dubai
(G+2) 12 Verve Villas	Cast Alum Gate & Fences	Jumeriah – Dubai
G+1 Private Villa	Steel Structure Works (Shed)	Al Qaryan – Sharjah
G+2 Private Villa	Cast Alum Gate, Staircase, Balcony & Car Parking Shed.	Al Ain
G+2 Private Villa	Mild Steel Decorative Staircase	Al Khawaneej – Dubai
G+1 Private Villa	Cast Alum Gate with Automation System	Medows 8 – Dubai
G+2 Private Villa	Cast Alum Gate, Fences & Balcony	Barsha North – Dubai
G+2 Private Villa	Cast Alum Gate with Automation System, Staircase & Balcony	Umm al Shaif – Duabi
G+2 Private Villa	Cast Alum Gate with Automation System, Staircase & Balcony	Jumeriah - Dubai
G+2 Private Villa	Cast Alum Gate with Automation System, Staircase & Balcony	Khawaneej - Dubai

# LIST OF COMPLETED PROJECTS

PROJECT NAME	JOB DESCRIPTION	LOCATION
(G+2) 50 Private Villas	Mild Steel Staircase & Cast Alum Fencing	Al Jurf 2 – Ajman
(G+2) 8 Private Villas	Cast Alum Gates & Staircase	Mirdiff – Dubai
G+2 Private Villa	Cast Alum Gate, Staircase & Balcony	Al Barsha – Dubai
(G+2) 2 Private Villas	Cast Alum Gate & Staircase	Al Ain
G+2 Private Villa	Cast Alum Gate	Al Khawaneej
G+2 Private Villa – A	Cast Alum Gate, Fence, Staircase & Balcony	Dubailand
G+2 Private Villa	Cast Alum Gate, Stainless Steel Railing , Mild Steel Spiral Staircase	Al Khawaneej
G+2 Private Villa – B	Cast Alum Gate, Fence, Staircase & Balcony	Dubailand
(G+2) 2 Private Villas	Cast Alum Gate, Fences, Staircase & Balcony	Dubailand
G+2 Private Villas	Cast Alum Gate, Fences, Staircase & Balcony	Dubailand
Warehouse	Mild Steel Gates	DIC –Dubai
G+2 Private Luxury Villa	Cast Alum Gate, Alum Canopy	Jumeriah
(G+2) 10 Villas	Mild Steel Canopy	Al Nouf Sharjah
G+1 Private Villa	Cast Alum Gate with Automation System & Staircase	Rahmania Sharjah
G+2 7 VILLA'S	Cast Alum Gate, boundry wall fence, swimming pool railing, staircase handrail, automatic system	MIRDIFF
G+1 VILLA	GATE WORK	NAD AL HAMAR
G+1 VILLA	GATE WORK	MIZHAR
G+1 VILLA	GATE WORK	MUDON
G+1 VILLA	LOUVER DOOR	UMM ESELAY, DUBAI
G+1 VILLA	PVC PARKING SHED	MIZHER, DUBAI
G+1 VILLA	STRUCTURAL STAIRCASE	DUBAI

# LIST OF COMPLETED PROJECTS

PROJECT NAME	JOB DESCRIPTION	LOCATION
G+1 VILLA	MILD STEEL PLATFORM	EMIRATES HILL
G+1 VILLA	CAST ALUMINIUM GATE	BARSHA
G+1 VILLA	ALUMINIUM LOUVER WORK	BARSHA
G+1 VILLA	STEEL SHED	AL NAHDA
G+1 VILLA	NET FEBRIC SHED	AL LESAILY,DUBAI
G+1 VILLA	ALUMINIUM GATE WITH AUTOMATIC SYSTEM	AL TAWAR,DUBAI
G+1 VILLA	CAST ALUMINIUM GATE,CAST ALUMINIUM INTERNAL DOOR	BARSHA,DUBAI
G+1 VILLA	CAST ALUMINIUM GATE	JUMERIAH
G+1 VILLA	CAST ALUMINIUM GATE,STAIRCASE,INTERNAL DOOR	KHOR FAKKAN
G+1 VILLA	CAST ALUMINIUM STAIRCASE	KHOR FAKKAN
G+1 VILLA	CAST ALUMINIUM GATE	SIYOH
G+1 VILLA	CAST ALUMINIUM GATE,FIX PANEL,OPENABLE WINDOW	REHMANIYA
G+1 VILLA	WROUGHT IRON STAIRCASE	ABU DHABI
G+1 VILLA	CAST ALUMINIUM GATE	MUDON
G+1 VILLA	CAST ALUMINIUM GATE	MUDON
G+1 VILLA	CAST ALUMINIUM GATE	HOR AL ANZ
G+1 VILLA	CAST ALUMINIUM GATE	AL NOUF SHARJAH
G+1 VILLA	CAST ALUMINIUM GATE	MUHAISNA,DUBAI
G+1 VILLA	CAST ALUMINIUM GATE	SHARJAH
G+1 VILLA	CAST ALUMINIUM GATE	MUHAISNA
G+1 VILLA	CAST ALUMINIUM GATE & STAIRCASE	SHARJAH

# LIST OF COMPLETED PROJECT

PROJECT NAME	JOB DESCRIPTION	LOCATION
MOSQUE	DOOM	NIGERIA
MOSQUE	WINDOW GRILL	NIGERIA
G+2 VILLA	CAST ALUMINIUM GATE,FENCING,BALCONY,AUTOMATIC SYSTEM	DUBAI LAND
G+2 VILLA	CAST ALUMINIUM GATE,FENCING,BALCONY,AUTOMATIC SYSTEM	BARSHA
G+2 VILLA	CAST ALUMINIUM GATE,STAIRCASE,BALCONY,AUTOMATIC SYSTEM	QUSAIS
G+2 VILLA	MS CAT LADDER	BARSHA
G+2 VILLA	CAST ALUMINIUM GATE,FENCING,STAIRCASE,BALCONY,MS CAT LADDER,AUTOMATIC SYSTEM	DUBAI LAND
HYUNDAI KIA SHOWROOM	CAST ALUMINIUM GATE,BOUNDRY WALL FENCE	FUJAIRAH
BUILDING PROJECT	BALCONY RAILING	DWC
BUILDING PROJECT	BALCONY RAILING	NAHDA
LABOUR CAMP	ALUMINIUM GATE,INTERNAL DOOR	AL QUOZ
LABOUR CAMP	CAST ALUMINIUM GATE	AL WARSAN DUBAI
POLICE STATION	MS JAIL DOORS	AJMAN
POLICE STATION	CAST ALUMINIUM GATE WITH AUTOMATIC SYSTEM	AJMAN
BUILDING PROJECT	FIRE RATED DOOR	ABU DHABI
LABOUR CAMP	CAST ALUMINIUM GATE	ABU HAIL
LABOUR CAMP	G.I RAILING	LEHBAB,DUBAI
OFFICE BUILDING	M.S PLATFORM	DUBAI

**Tel: 06-5393727**

**Email: info@aimmetal.com,P.O Box: 78695, Sharjah,UAE**

**Customare Care Contact:- 050-2034580**



# AL IKHTYAR AL MUMAYYAZ AUTOMATIC DOORS. TR



## PRODUCT CATALOGS

*Tel: 06-5393727*

*Email: info@aimmetal.com, P.O Box: 78695, Sharjah, UAE*

*Customer Care Contact:- 050-2034580*

# EXECUTED PROJECTS



*Tel: 06-5393727*

*Email: [info@aimmetal.com](mailto:info@aimmetal.com), P.O Box: 78695, Sharjah, UAE*

*Customare Care Contact:- 050-2034580*

# EXECUTED PROJECTS



*Tel: 06-5393727*

*Email: [info@aimmetal.com](mailto:info@aimmetal.com), P.O Box: 78695, Sharjah, UAE*

*Customare Care Contact:- 050-2034580*

# EXECUTED PROJECTS



*Tel: 06-5393727*

*Email: [info@aimmetal.com](mailto:info@aimmetal.com), P.O Box: 78695, Sharjah, UAE*

*Customer Care Contact:- 050-2034580*

# EXECUTED PROJECTS



*Tel: 06-5393727*

*Email: [info@aimmetal.com](mailto:info@aimmetal.com), P.O Box: 78695, Sharjah, UAE*

*Customare Care Contact:- 050-2034580*

# EXECUTED PROJECTS



*Tel: 06-5393727*

*Email: [info@aimmetal.com](mailto:info@aimmetal.com), P.O Box: 78695, Sharjah, UAE*

*Customer Care Contact:- 050-2034580*

# EXECUTED PROJECTS



*Tel: 06-5393727*

*Email: [info@aimmetal.com](mailto:info@aimmetal.com), P.O Box: 78695, Sharjah, UAE*

*Customer Care Contact:- 050-2034580*

# EXECUTED PROJECTS



*Tel: 06-5393727*

*Email: [info@aimmetal.com](mailto:info@aimmetal.com), P.O Box: 78695, Sharjah, UAE*

*Customare Care Contact:- 050-2034580*

# GOVERNMENT PROJECTS



## DUBAI MUNICIPALITY WORK

*Tel: 06-5393727*

*Email: [info@aimmetal.com](mailto:info@aimmetal.com), P.O Box: 78695, Sharjah, UAE*

*Customare Care Contact:- 050-2034580*

# GOVERNMENT PROJECTS



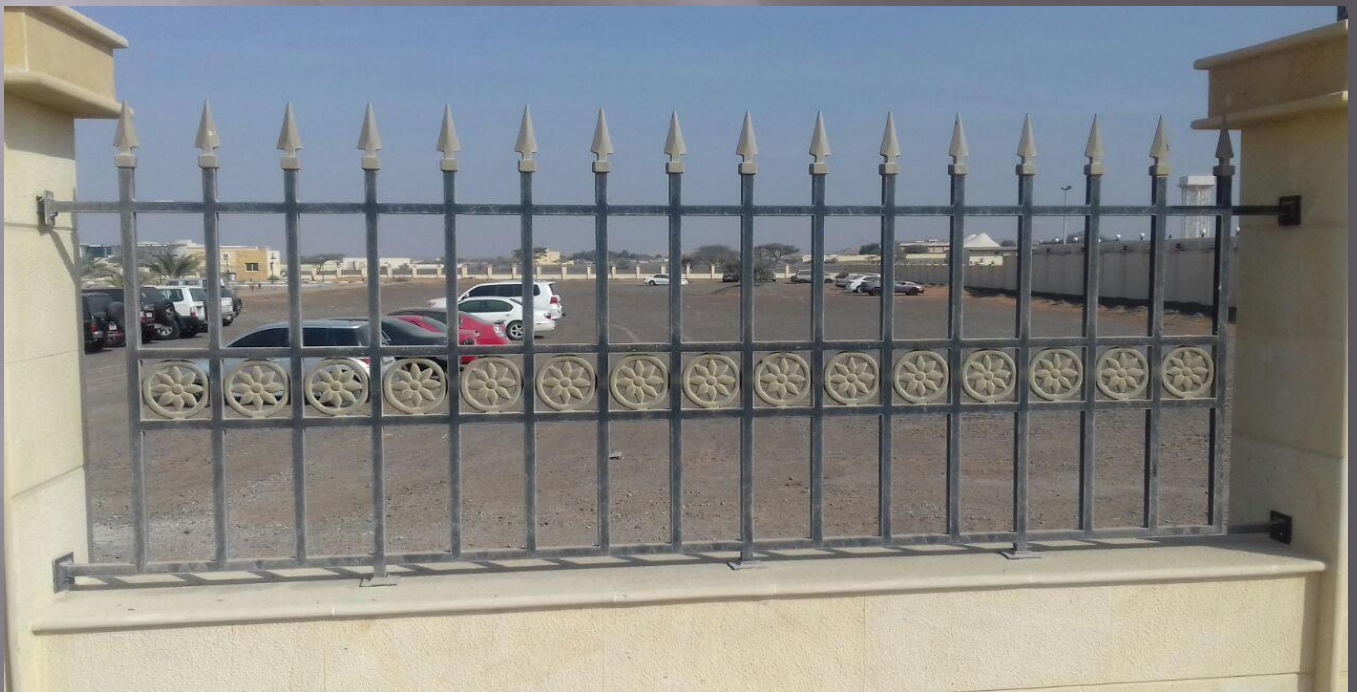
**MINISTRY OF EDUCATION DUBAI**

*Tel: 06-5393727*

*Email: [info@aimmetal.com](mailto:info@aimmetal.com), P.O Box: 78695, Sharjah, UAE*

*Customare Care Contact:- 050-2034580*

# GOVERNMENT PROJECTS



## **AJMAN POLICE STATION**

*Tel: 06-5393727*

*Email: [info@aimmetal.com](mailto:info@aimmetal.com), P.O Box: 78695, Sharjah, UAE*

*Customare Care Contact:- 050-2034580*

# SCHOOL PROJECTS



**NEXT GENERATION SCHOOL AT BARSHA**



**GEMS WINCHESTER SCHOOL PROJECT AT FUJAIRAH**

*Tel: 06-5393727*

*Email: [info@aimmetal.com](mailto:info@aimmetal.com), P.O Box: 78695, Sharjah, UAE*

*Customare Care Contact:- 050-2034580*

# SHOWROOM PROJECTS



**KIA SHOWROOM AT SHARJAH**



**VOLKSWAGON SHOWROOM AT FUJAIRAH**

*Tel: 06-5393727*

*Email: info@aimmetal.com, P.O Box: 78695, Sharjah, UAE*

*Customare Care Contact:- 050-2034580*

# RESTURANT PROJECT



## **SUTIS RESTURANT AT JUMERIAH**

*Tel: 06-5393727*

*Email: info@aimmetal.com, P.O Box: 78695, Sharjah, UAE*

*Customare Care Contact:- 050-2034580*

# BUILDING PROJECT

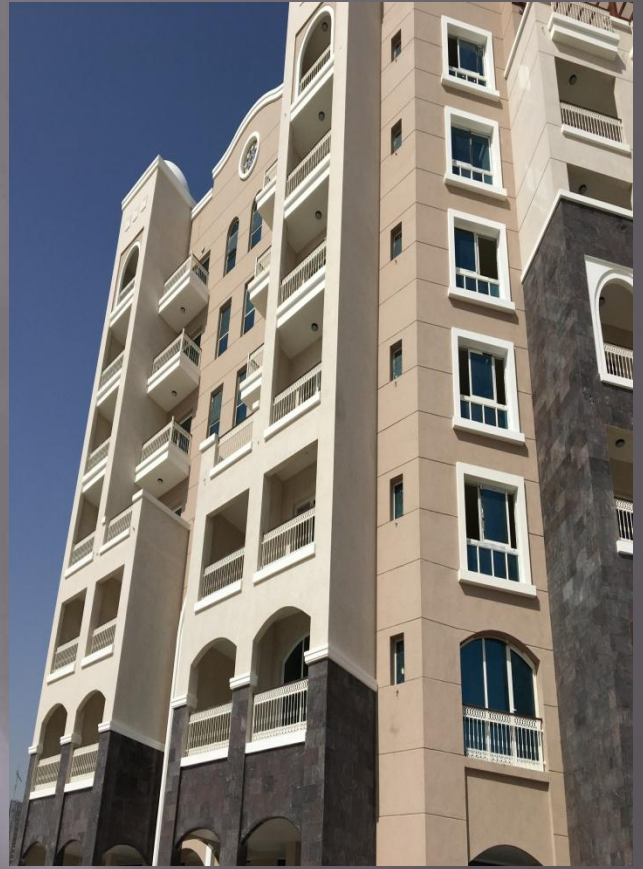


*Tel: 06-5393727*

*Email: [info@aimmetal.com](mailto:info@aimmetal.com), P.O Box: 78695, Sharjah, UAE*

*Customare Care Contact:- 050-2034580*

# BUILDING PROJECT



*Tel: 06-5393727*

*Email: [info@aimmetal.com](mailto:info@aimmetal.com), P.O Box: 78695, Sharjah, UAE*

*Customer Care Contact:- 050-2034580*

# BUILDING PROJECT



*Tel: 06-5393727*

*Email: [info@aimmetal.com](mailto:info@aimmetal.com), P.O Box: 78695, Sharjah, UAE*

*Customare Care Contact:- 050-2034580*

# EXECUTED PROJECTS



**(G+2) 41 Private Villas Projects DIP Dubai**



*Tel: 06-5393727*

*Email: [info@aimmetal.com](mailto:info@aimmetal.com), P.O Box: 78695, Sharjah, UAE*

*Customare Care Contact:- 050-2034580*

# EXECUTED PROJECTS



**CAST ALUMINIUM CLAUSTRAS AT AL BARSHA 30 VILLA'S**

*Tel: 06-5393727*

*Email: [info@aimmetal.com](mailto:info@aimmetal.com), P.O Box: 78695, Sharjah, UAE*

*Customer Care Contact:- 050-2034580*

# EXECUTED PROJECTS



**TEN VILLA'S IN BARSHA & KHAWANEEJ**

*Tel: 06-5393727*

*Email: [info@aimmetal.com](mailto:info@aimmetal.com), P.O Box: 78695, Sharjah, UAE*  
*Customare Care Contact:- 050-2034580*

# EXECUTED PROJECTS



## **SIX VILLA'S IN JUMERIAH**

*Tel: 06-5393727*

*Email: [info@aimmetal.com](mailto:info@aimmetal.com), P.O Box: 78695, Sharjah, UAE*

*Customare Care Contact:- 050-2034580*

# EXECUTED PROJECT



## VILLA AT JUMERIAH

*Tel: 06-5393727*

*Email: info@aimmetal.com, P.O Box: 78695, Sharjah, UAE*

*Customare Care Contact:- 050-2034580*

# EXECUTED PROJECT



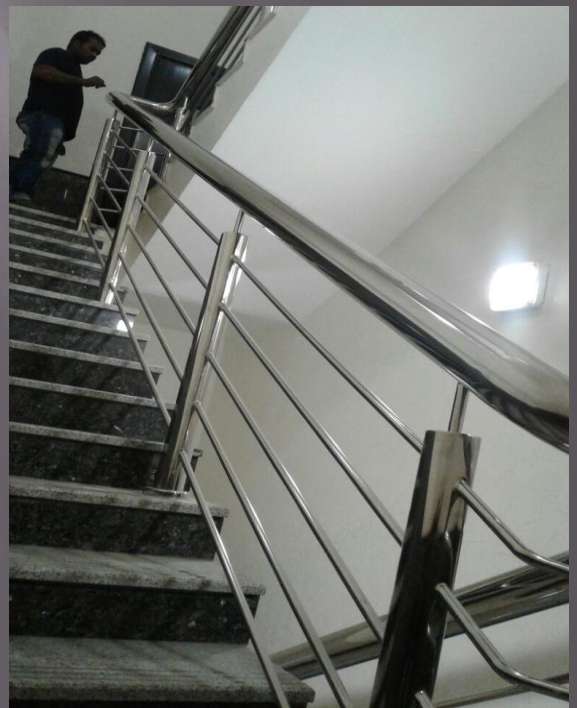
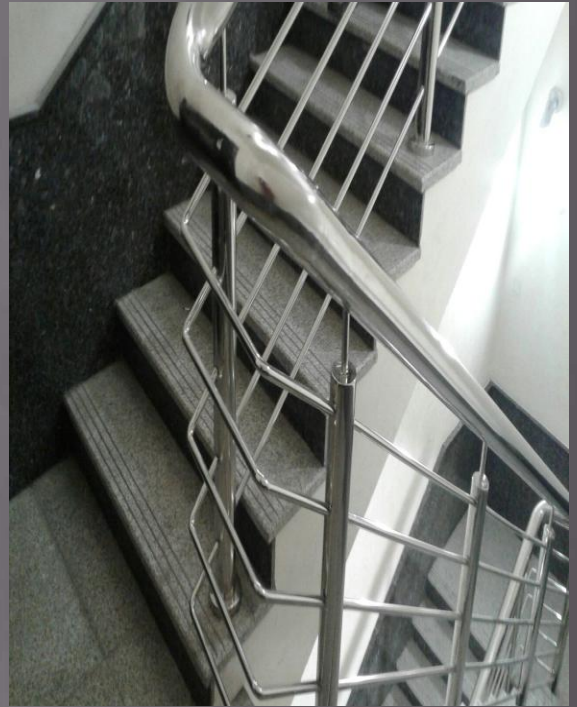
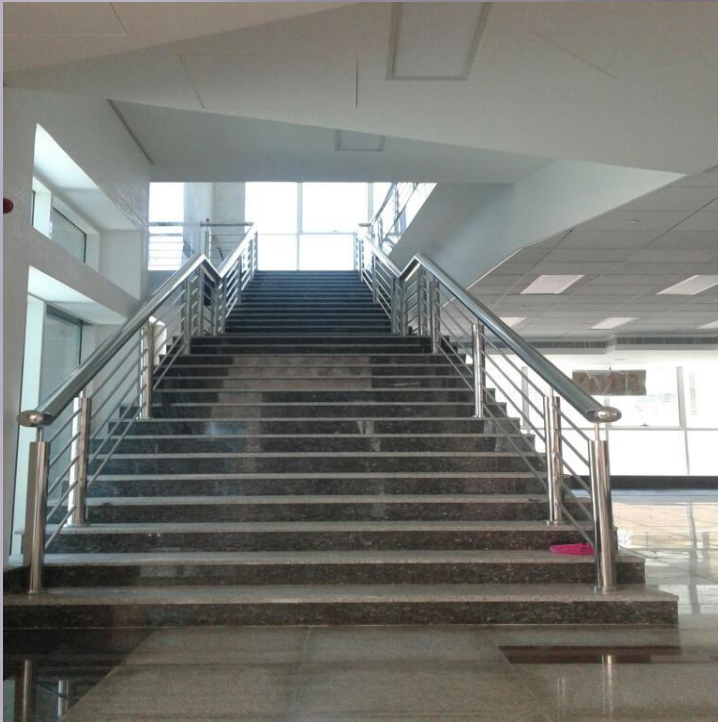
## VILLA AT JUMERIAH

*Tel: 06-5393727*

*Email: info@aimmetal.com, P.O Box: 78695, Sharjah, UAE*

*Customare Care Contact:- 050-2034580*

# EXECUTED PROJECT



## PROJECT AT FUJAIRAH

*Tel: 06-5393727*

*Email: [info@aimmetal.com](mailto:info@aimmetal.com), P.O Box: 78695, Sharjah, UAE*

*Customare Care Contact:- 050-2034580*

# UTED PROJECTEXEC



## PROJECT AT DUBAI

*Tel: 06-5393727*

*Email: [info@aimmetal.com](mailto:info@aimmetal.com), P.O Box: 78695, Sharjah, UAE*

*Customare Care Contact:- 050-2034580*

# MILD STEEL AND STAINLESS STEEL CAT LADDERS

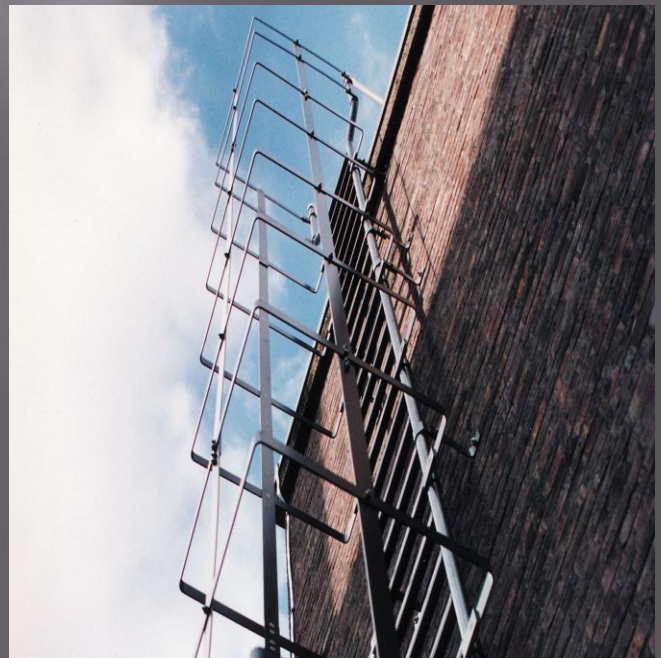
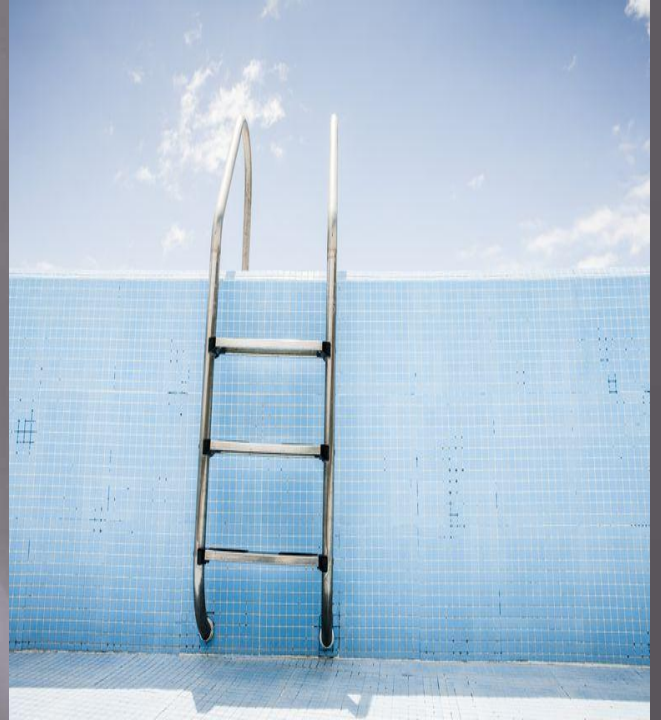


*Tel: 06-5393727*

*Email: [info@aimmetal.com](mailto:info@aimmetal.com), P.O Box: 78695, Sharjah, UAE*

*Customare Care Contact:- 050-2034580*

# MILD STEEL AND STAINLESS STEEL CAT LADDERS



*Tel: 06-5393727*

*Email: [info@aimmetal.com](mailto:info@aimmetal.com), P.O Box: 78695 Sharjah, UAE*

*Customare Care Contact:- 050-2034580*

# MILD STEEL AND STAINLESS STEEL CAT LADDERS



*Tel: 06-5393727*

*Email: [info@aimmetal.com](mailto:info@aimmetal.com), P.O Box: 78695 Sharjah, UAE*

*Customer Care Contact:- 050-2034580*

# MILD STEEL AND STAINLESS STEEL CAT LADDERS



*Tel: 06-5393727*

*Email: [info@aimmetal.com](mailto:info@aimmetal.com), P.O Box: 78695 Sharjah, UAE*

*Customare Care Contact:- 050-2034580*

# MILD STEEL AND STAINLESS STEEL CAT LADDERS



*Tel: 06-5393727*

*Email: [info@aimmetal.com](mailto:info@aimmetal.com), P.O Box: 78695, Sharjah, UAE*

*Customare Care Contact:- 050-2034580*

# GATES



**G+2 VILLA'S KHAWANEEJ**



**G+2 VILLA'S AL JURF AJMAN**

*Tel: 06-5393727*

*Email: [info@aimmetal.com](mailto:info@aimmetal.com), P.O Box: 78695, Sharjah, UAE*  
*Customare Care Contact:- 050-2034580*

# GATES



**VILLA AT BARSHA**



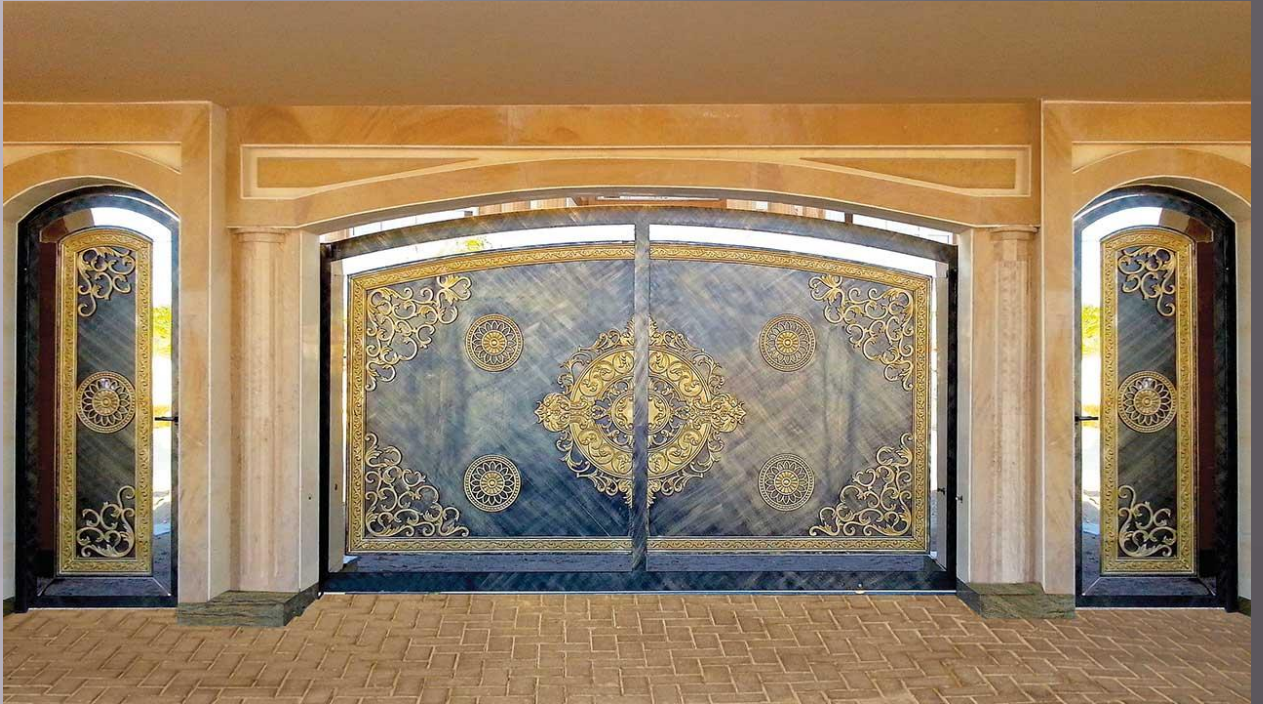
**VILLA AT AL QUOZ**

*Tel: 06-5393727*

*Email: [info@aimmetal.com](mailto:info@aimmetal.com), P.O Box: 78695, Sharjah, UAE*

*Customare Care Contact:- 050-2034580*

# GATES



**VILLA AT SHARJAH**



**VILLA AT QARIAN**

*Tel: 06-5393727*

*Email: [info@aimmetal.com](mailto:info@aimmetal.com), P.O Box: 78695, Sharjah, UAE*

*Customare Care Contact:- 050-2034580*



**VILLA AT NAD AL HAMAR**



**VILLA AT REHMANIYA**

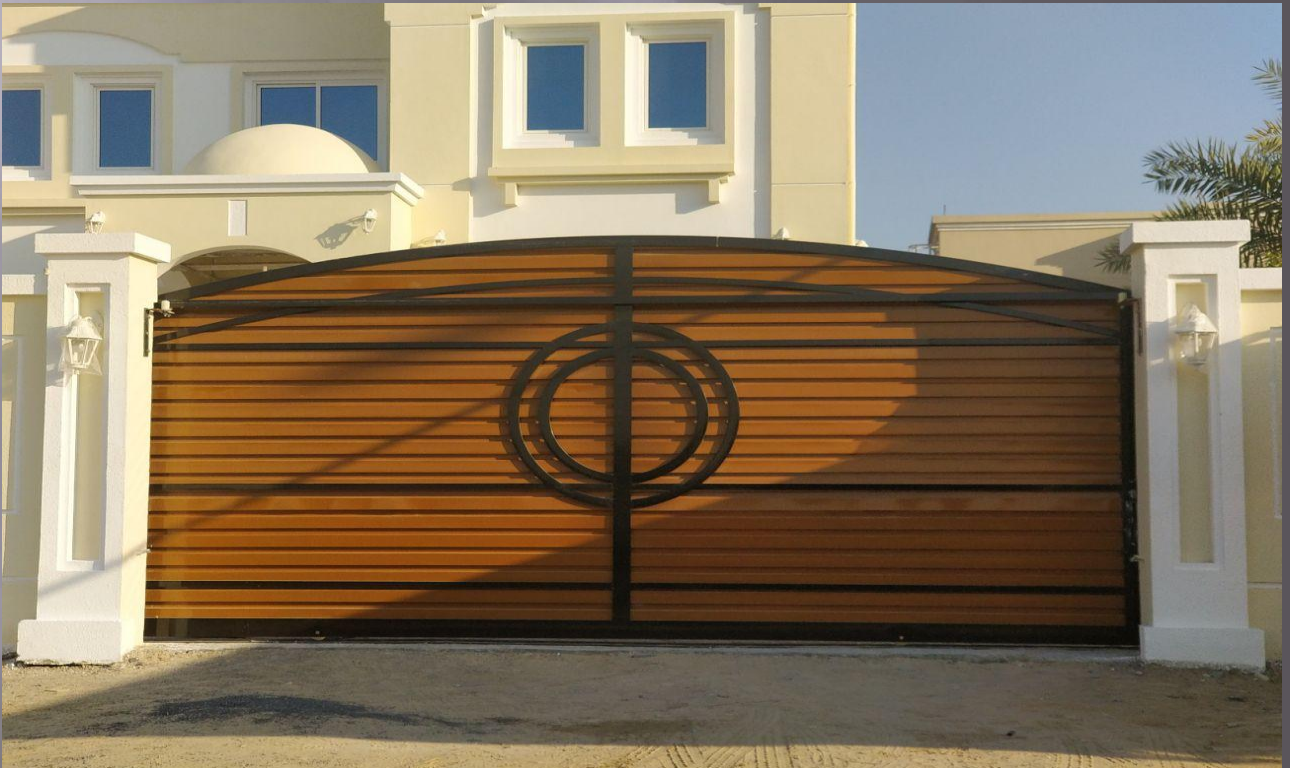
*Tel: 06-5393727*

*Email: [info@aimmetal.com](mailto:info@aimmetal.com), P.O Box: 78695, Sharjah, UAE*

*Customare Care Contact:- 050-2034580*



**VILLA AT AL TAWAR**



**VILLA AT DUBAI**

*Tel: 06-5393727*

*Email: [info@aimmetal.com](mailto:info@aimmetal.com), P.O Box: 78695, Sharjah, UAE*

*Customare Care Contact:- 050-2034580*

# GATES



**VILLA AL QUOZ**

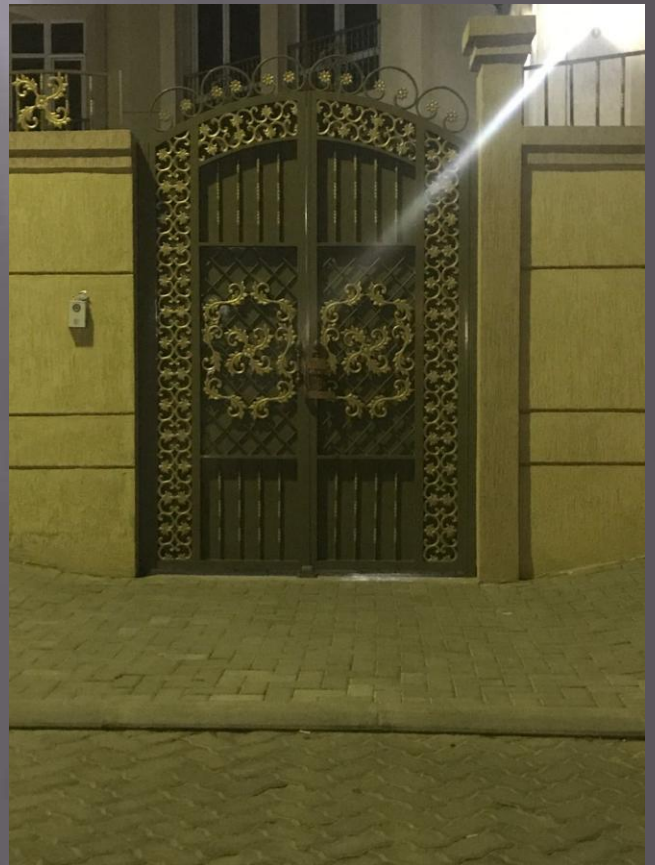


**VILLA NAD AL HAMAR**

*Tel: 06-5393727*

*Email: [info@aimmetal.com](mailto:info@aimmetal.com), P.O Box: 78695, Sharjah, UAE*  
*Customare Care Contact:- 050-2034580*

# GATES

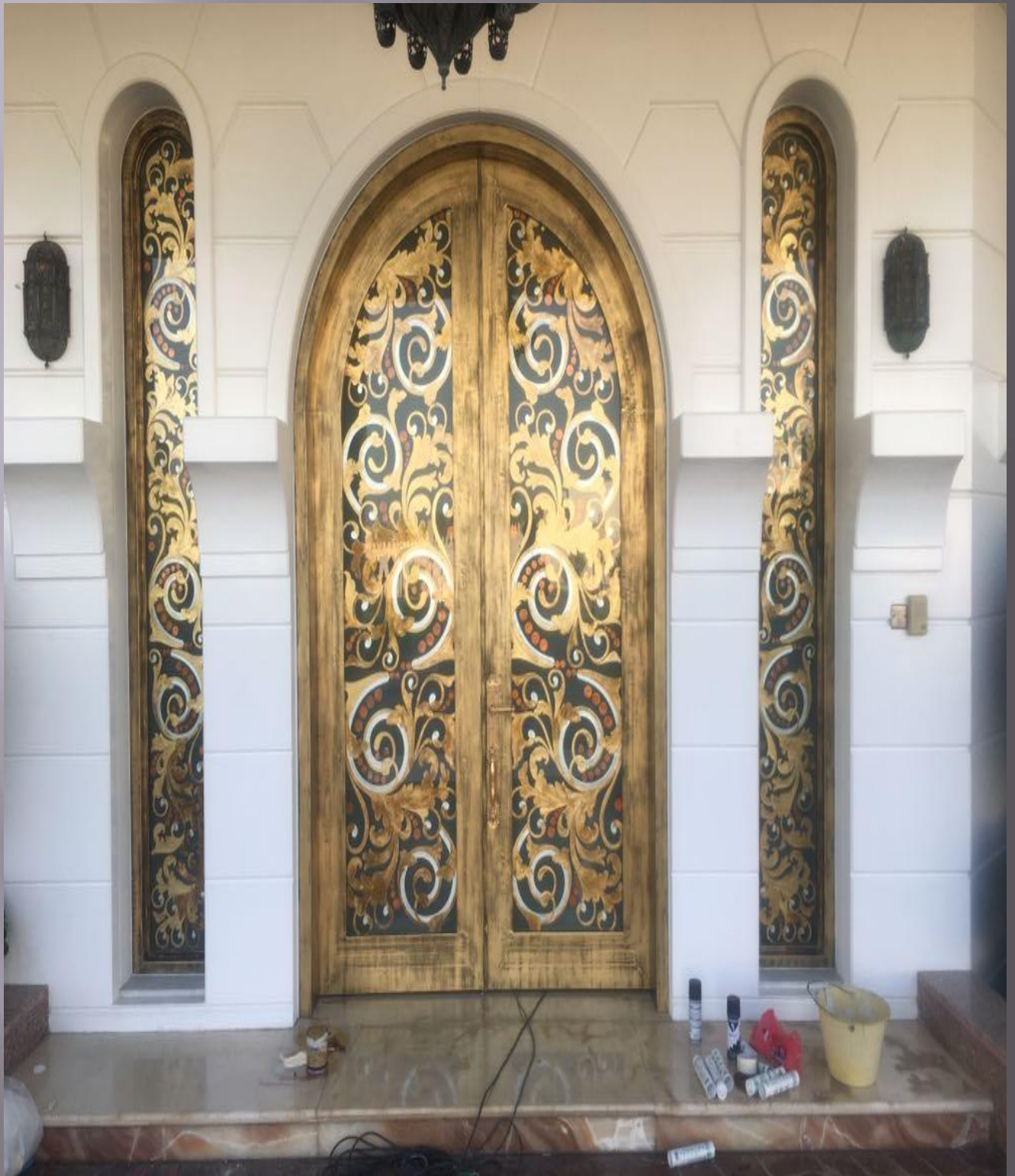


*Tel: 06-5393727*

*Email: [info@aimmetal.com](mailto:info@aimmetal.com), P.O Box: 78695, Sharjah, UAE*

*Customare Care Contact:- 050-2034580*

# INTERNAL DOOR



**SHEIKHA RANA VILLA AT ABU DHABI**

*Tel: 06-5393727*

*Email: info@aimmetal.com, P.O Box: 78695, Sharjah, UAE*

*Customare Care Contact:- 050-2034580*

# RECENT COMPLETED PROJECT



*Tel: 06-5393727*

*Email: [info@aimmetal.com](mailto:info@aimmetal.com), P.O Box: 78695, Sharjah, UAE*

*Customare Care Contact:- 050-2034580*

# RECENT COMPLETED PROJECT

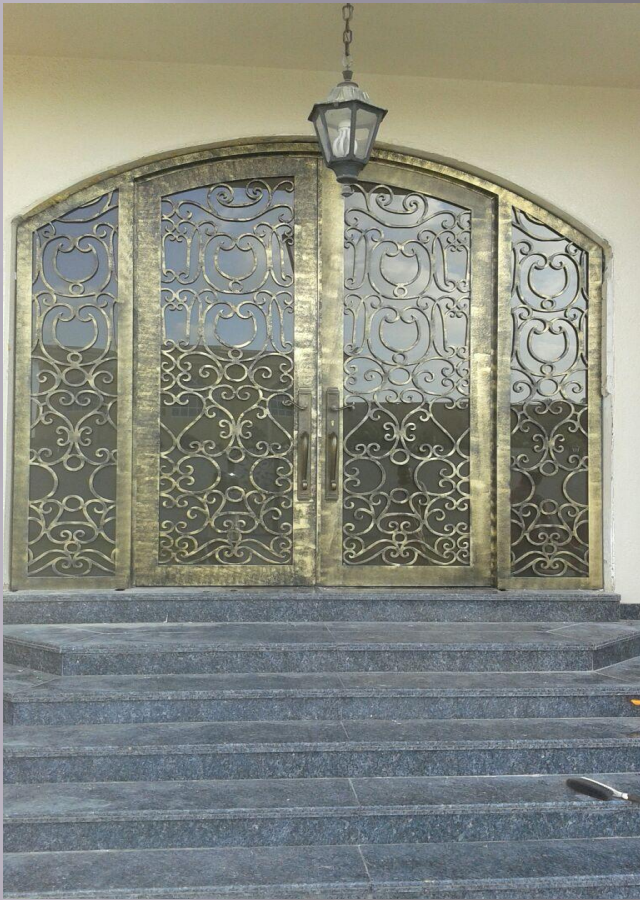


*Tel: 06-5393727*

*Email: [info@aimmetal.com](mailto:info@aimmetal.com), P.O Box: 78695, Sharjah, UAE*

*Customare Care Contact:- 050-2034580*

# RECENT COMPLETED PROJECT



*Tel: 06-5393727*

*Email: [info@aimmetal.com](mailto:info@aimmetal.com), P.O Box: 78695, Sharjah, UAE*

*Customare Care Contact:- 050-2034580*

# RECENT COMPLETED PROJECT



Tel: 06-5393727

Email: [info@aimmetal.com](mailto:info@aimmetal.com), P.O Box: 78695, Sharjah, UAE

Customare Care Contact:- 050-2034580

# STAIRCASE



*Tel: 06-5393727*

*Email: [info@aimmetal.com](mailto:info@aimmetal.com), P.O Box: 78695, Sharjah, UAE*

*Customare Care Contact:- 050-2034580*



*Tel: 06-5393727*

*Email: [info@aimmetal.com](mailto:info@aimmetal.com), P.O Box: 78695, Sharjah, UAE*

*Customare Care Contact:- 050-2034580*



*Tel: 06-5393727*

*Email: [info@aimmetal.com](mailto:info@aimmetal.com), P.O Box: 78695, Sharjah, UAE*

*Customare Care Contact:- 050-2034580*



*Tel: 06-5393727*

*Email: [info@aimmetal.com](mailto:info@aimmetal.com), P.O Box: 78695, Sharjah, UAE*

*Customare Care Contact:- 050-2034580*



*Tel: 06-5393727*

*Email: [info@aimmetal.com](mailto:info@aimmetal.com), P.O Box: 78695, Sharjah, UAE*

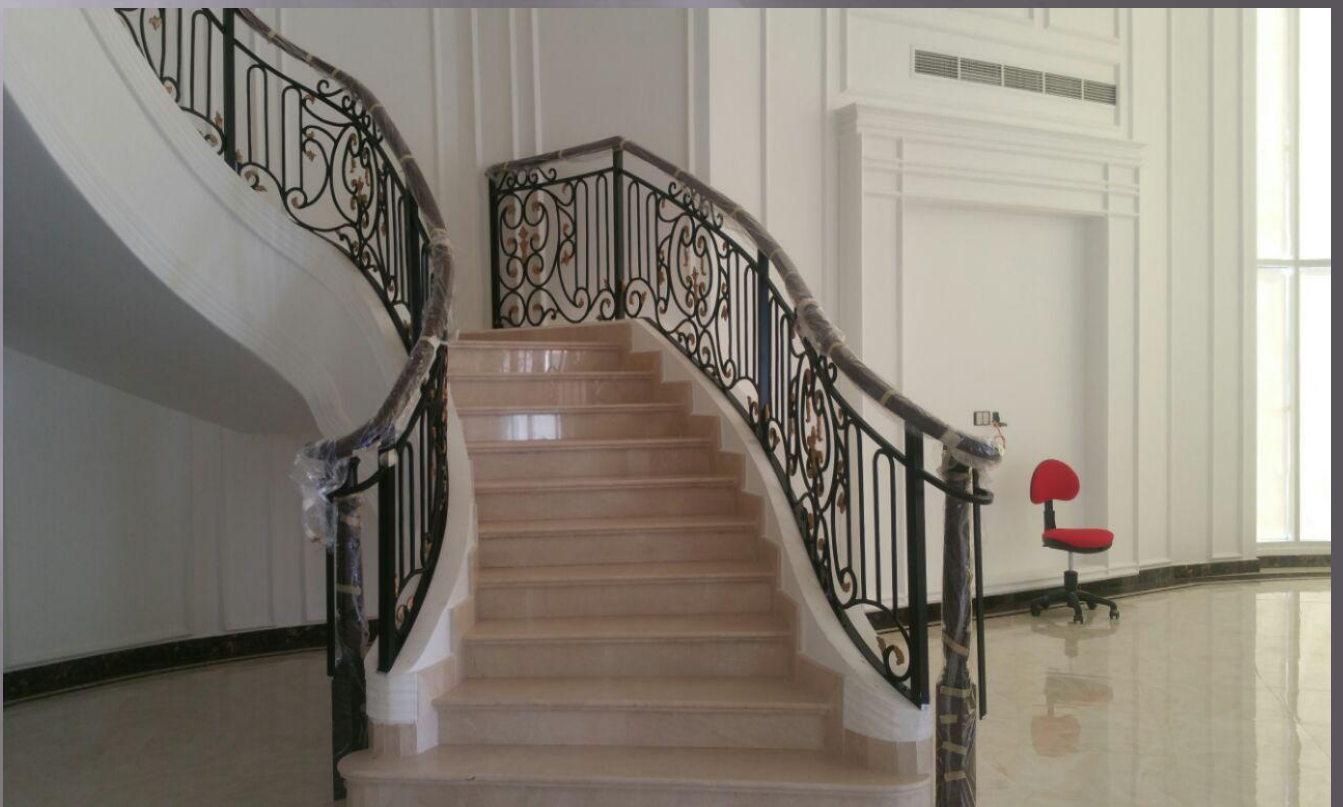
*Customare Care Contact:- 050-2034580*



*Tel: 06-5393727*

*Email: [info@aimmetal.com](mailto:info@aimmetal.com), P.O Box: 78695, Sharjah, UAE*

*Customare Care Contact:- 050-2034580*



*Tel: 06-5393727*

*Email: [info@aimmetal.com](mailto:info@aimmetal.com), P.O Box: 78695, Sharjah, UAE*

*Customare Care Contact:- 050-2034580*



*Tel: 06-5393727*

*Email: [info@aimmetal.com](mailto:info@aimmetal.com), P.O Box: 78695, Sharjah, UAE*

*Customare Care Contact:- 050-2034580*

# BALCONY



**DUBAI LAND**

*Tel: 06-5393727*

*Email: [info@aimmetal.com](mailto:info@aimmetal.com), P.O Box: 78695, Sharjah, UAE*

*Customare Care Contact:- 050-2034580*



*Tel: 06-5393727*

*Email: [info@aimmetal.com](mailto:info@aimmetal.com), P.O Box: 78695, Sharjah, UAE*

*Customare Care Contact:- 050-2034580*



*Tel: 06-5393727*

*Email: info@aimmetal.com, P.O Box: 78695, Sharjah, UAE*

*Customare Care Contact:- 050-2034580*



*Tel: 06-5393727*

*Email: [info@aimmetal.com](mailto:info@aimmetal.com), P.O Box: 78695, Sharjah, UAE*

*Customare Care Contact:- 050-2034580*

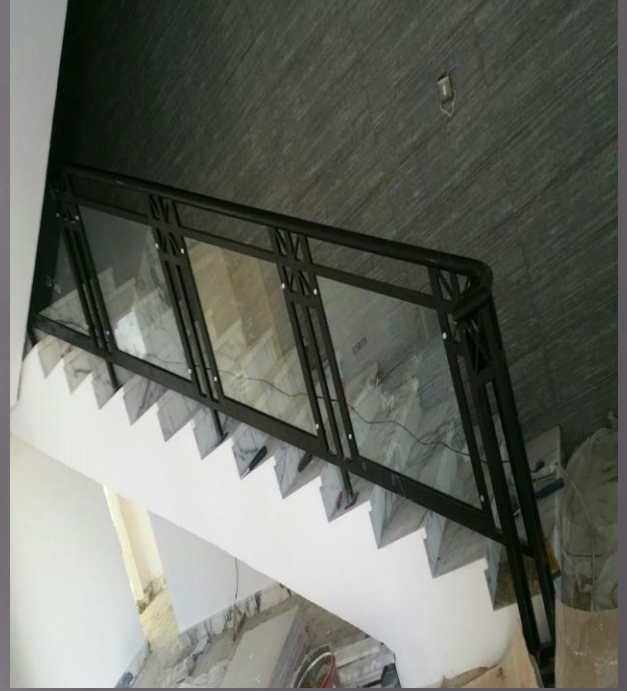


*Tel: 06-5393727*

*Email: [info@aimmetal.com](mailto:info@aimmetal.com), P.O Box: 78695, Sharjah, UAE*

*Customare Care Contact:- 050-2034580*

# EXECUTED PROJECT



**AL WARQA 3**

*Tel: 06-5393727*

*Email: [info@aimmetal.com](mailto:info@aimmetal.com), P.O Box: 78695, Sharjah, UAE*

*Customare Care Contact:- 050-2034580*

# EXECUTED PROJECT



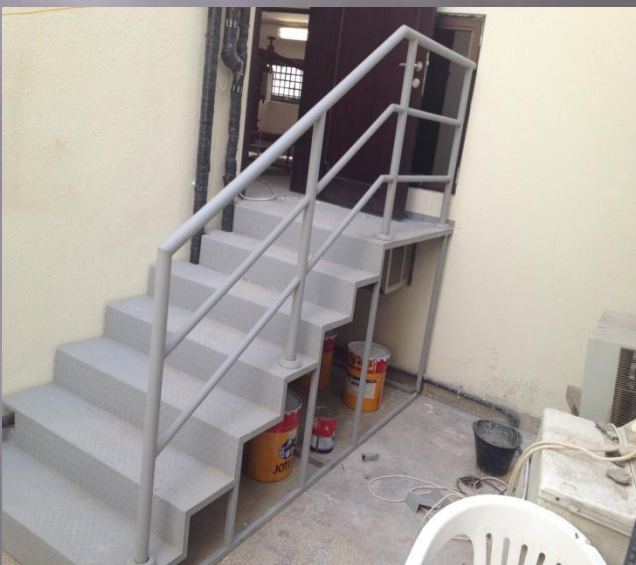
## VILLA AT BARSHA

*Tel: 06-5393727*

*Email: [info@aimmetal.com](mailto:info@aimmetal.com), P.O Box: 78695, Sharjah, UAE*

*Customare Care Contact:- 050-2034580*

# EXECUTED PROJECT



## STRUCTURAL WORK

*Tel: 06-5393727*

*Email: info@aimmetal.com, P.O Box: 78695, Sharjah, UAE*

*Customer Care Contact:- 050-2034580*

# EXECUTED PROJECT



## VILLA AT MIZHER

*Tel: 06-5393727*

*Email: [info@aimmetal.com](mailto:info@aimmetal.com), P.O Box: 78695, Sharjah, UAE*  
*Customare Care Contact:- 050-2034580*

# EXECUTED PROJECT



## CAR PARKING SHED IN SHARJAH

*Tel: 06-5393727*

*Email: info@aimmetal.com, P.O Box: 78695, Sharjah, UAE*

*Customare Care Contact:- 050-2034580*

# EXECUTED PROJECT



## CAR PARKING SHED IN DUBAI

*Tel: 06-5393727*

*Email: [info@aimmetal.com](mailto:info@aimmetal.com), P.O Box: 78695, Sharjah, UAE*

*Customare Care Contact:- 050-2034580*

# EXECUTED PROJECT



## SPIRAL WORK AT HOSHI

*Tel: 06-5393727*

*Email: info@aimmetal.com, P.O Box: 78695, Sharjah, UAE*

*Customare Care Contact:- 050-2034580*

# Main Office License

GOVERNMENT OF SHARJAH  
Economic Development Department



حُكُومَةُ الشَّارِجَةِ  
دائرة التنمية الاقتصادية



استثمر في الشارقة  
invest in Sharjah

رخصة تجارية  
Trading License



\* 7 4 7 0 3 3 \*

## License Details تفاصيل الرخصة

Issue Date	2016/08/29	تاريخ الإصدار	License No.	747033	رقم الرخصة
Expiry Date	2019/08/29	تاريخ الإنتهاء	Registration No.	172268	رقم السجل
Trade Name	ALIKHTAYAR AL MUMAYAZ AUTOMATIC DOORS TR		الاختيار المميز لتجارة الابواب الاتوماتيكية		
Legal status	Services Agency		الشكل القانوني وكيل خدمات		

## License Members أطراف الرخصة

الحصص	الصفة	رقم الهوية / الجواز	الجنسية	إسم المستثمر	رقم المستثمر
Shares	Type	ID/Passport No.	Nationality	Investor Name	Investor No.
%0	وكيل خدمات	784196983542919	الإمارات	حسن محمد حسن خميس بشكردي	6387
%100	المالك	J2949949	الهند	سونيل بلراج كريشنان	4777014

أنشطة الرخصة بيع المصنوعات المعدنية للابنية و النوافذ والابواب - بالتجزئة، بيع الخيام و المظلات - بالتجزئة، بيع البوابات و الحواجز الالكترونية - بالتجزئة  
العنوان المنطقة الوسطى-البطائح-صناعيه البطائح -محل رقم 2+1 ملك عبدالله علي سالم بن رشيد الكتبي

رقم الهاتف المتحرك: 0504639728  
صندوق البريد: 78695

## Notes ملاحظات

رقم اللوحة 302994



2018/09/11

تاريخ الطباعة

39803

رقم المستخدم

- This document is official. It doesn't need to be stamped or signed.  
To view license details please visit SEDD web site: [www.sedd.ae](http://www.sedd.ae)  
- Distribution of flyers is strictly prohibited in public and residential areas. Distribution is allowed through.

- هذه الوثيقة رسمية ولا تحتاج لخطم أو توقيع.  
للتأكد من صحة البيانات يرجى زيارة موقع الدائرة: [www.sedd.ae](http://www.sedd.ae)  
- يمنع معاةً بقا توزيع الإعلانات في الأماكن العامة و الأحياء السكنية. التوزيع فقط عن طريق الصحف، المجلات وصناديق البريد.

Tel: 06-5393727

Email: [info@aimmetal.com](mailto:info@aimmetal.com), P.O Box: 78695, Sharjah, UAE

Customare Care Contact:- 050-2034580

# FACTORY INDUSTRIAL LICENSE

GOVERNMENT OF SHARJAH  
Economic Development Department



حكومة الشارقة  
دائرة التنمية الاقتصادية



استثمر في الشارقة  
invest in Sharjah

رخصة صناعية  
Industrial License



\* 7 2 3 5 3 3 \*

Issue Date		2014/03/25	تاريخ الإصدار	License No.	723533	رقم الرخصة
Expiry Date		2019/03/25	تاريخ الإنتهاء	Registration No.	156844	رقم السجل
Trade Name	AL REHAB METAL MOULDING LLC					الإسم التجاري
Legal status	Limited Liability Company					الشكل القانوني شركة ذات مسؤولية محدودة

اطراف الرخصة					
الحصص	الصفة	رقم الهوية / الجواز	الجنسية	إسم المستثمر	رقم المستثمر
Shares	Type	ID/Passport No.	Nationality	Investor Name	Investor No.
%51	شريك	784196171658048	الإمارات	حسن عبدالله يوسف حسن	12676
%25	شريك	J 5288098	الهند	سونيا ماهاجان راج كومار ماهاجان	4736905
%24	شريك	J2949949	الهند	سونيل بلراج كريشنان	4777014

المدير: سونيل بلراج كريشنان  
أنشطة الرخصة: صهر وتشكيل المعادن  
العنوان: المنطقة الوسطى-البيطنح-صناعيه البيطنح -أرض مسورة-مكتب رقم 1 ملك عبدالله علي سالم سلطان بن رشيد الكتبي

رقم الهاتف المتحرك: 0504639728  
صندوق البريد: 78695 الشارقة

## الملاحظات

رقم اللوحة 288024  
- خروج شريك / شركاء، و دخول آخر / آخرين



- This document is official. It doesn't need to be stamped or signed.  
To view license details please visit SEDD web site: [www.sedd.ae](http://www.sedd.ae)  
- Distribution of flyers is strictly prohibited in public and residential areas. Distribution is allowed through.

2018/06/25

40114

تاريخ الطباعة

رقم المستخدم

- هذه الوثيقة رسمية ولا تحتاج لفتح أو توقيع.  
للتأكد من صحة البيانات يرجى زيارة موقع الدائرة: [www.sedd.ae](http://www.sedd.ae)  
- يمنع منعاً باتاً توزيع الإعلانات في الأماكن العامة و الأحياء السكنية. التوزيع فقط عن طريق الصحف، المجلات وصناديق البريد.

Tel: 06-5393727

Email: [info@aimmetal.com](mailto:info@aimmetal.com), P.O Box: 78695, Sharjah, UAE

Customare Care Contact:- 050-2034580



**AL IKHTAYAR AL MUMAYAZ  
AUTOMATIC DOORS TRC**

*Tel: 06-5393727*

*Email: [info@aimmetal.com](mailto:info@aimmetal.com), P.O Box: 78695,  
Sharjah, UAE*

*Customare Care Contact:- 050-2034580*